



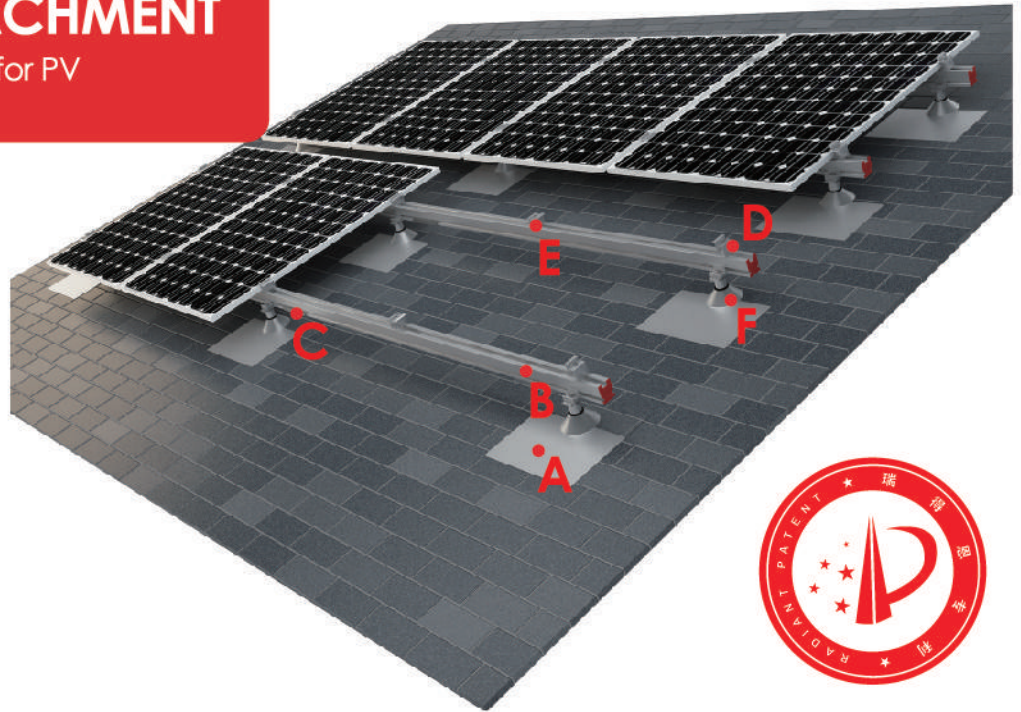
Reliable Energy Solutions

FLASHING ATTACHMENT

Rooftop mounting system for PV Modules/Laminates

Our Flashing attachment is an all-in-one waterproof flashing to anchor photovoltaic racking systems, solar thermal panels, air conditioning units, satellite dishes, or anything you may need to secure to a composite shingle roof.

- Flexible rooftop mount system
- Significant savings
- Compatible with most modules
- Static reliability
- Maximum service life



Flashing Attachment Material:AL6005-T5 & SUS304	A Base Rail:34X34 40X40 40X60 Material:AL6005-T5	B Base Rail:40/56 40/60 Splice Material:AL6005-T5& SUS304	C End /Middle Clamp Kit Material:AL6005-T5& SUS304	D/E Wood screw Material:Q235(Surface Dacromet)	F

Pitch Roof
 Wind load $\leq 42\text{m/s}$
 Snow load 1.4KN/m^2
 Framed module
 Unframed module
 Orientation landscape
 Orientation portrait
 10 YEARS WARRANTY
Material warranty

Technical Datasheet :

Application	Pitch roof
Wind load	up to 42m/s
Snow load	1.4KN/m ²
PV modules	Framed, unframed
Module layout	according to requirements
Module orientation	landscape, portrait
Module inclination	0° - 45°
Building height	Up to 20m
Distance between roof fixing points	Up to 2m
Standards	JIS 8955:2011/DIN1055/ASCE_7-05/AS/NZS1170
Color	Natural
Warranty	10 years